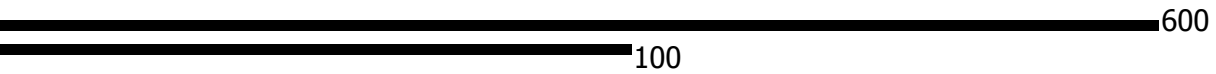


Google earth

feet
meters



SPEELER FOUNDATIONS, INC.
 6111 142nd Avenue North
 Clearwater, FL 33760
 (727) 535-5735
 FAX (727) 535-6041

JOB: Galati Yacht Sales
 SHEET NO: 1 OF 1
 CALCULATED BY: H.B.
 CHECKED BY:
 SCALE: 1"=40' (U.N.O.)

DATE: 9/20/16
 DATE:

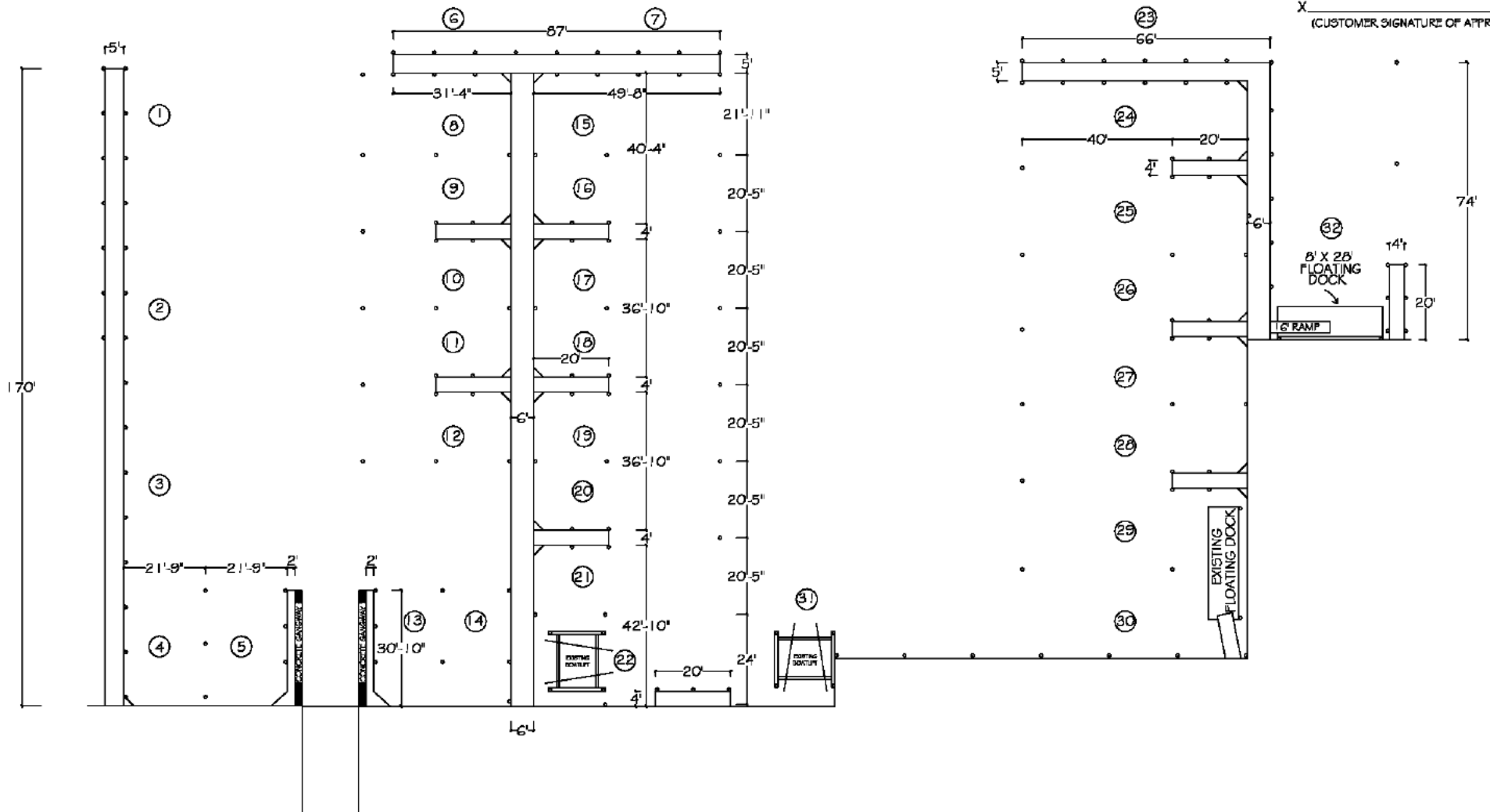
QUALITY MATERIALS
 TIMBER PILING
 2.5 C.C.A. SALT TREATED
 BOAT LIFT AND TIE PILING
 HAMMER DRIVEN

OUTSIDE STRINGERS DOUBLE
 2x10 PRESSURE TREATED
 BOLTED WITH 5/8" GALVANIZED BOLTS
 2FT. ON CENTERS MAX.

INTERMEDIATE STRINGERS
 2FT. ON CENTERS MAX.

DECKING 2x6 .40 ADG #1 DENSE
 FASTENED WITH STAINLESS STEEL SCREWS

DECKING OPTIONS
 * AZEK PVC



X _____
 (CUSTOMER SIGNATURE OF APPROVAL)

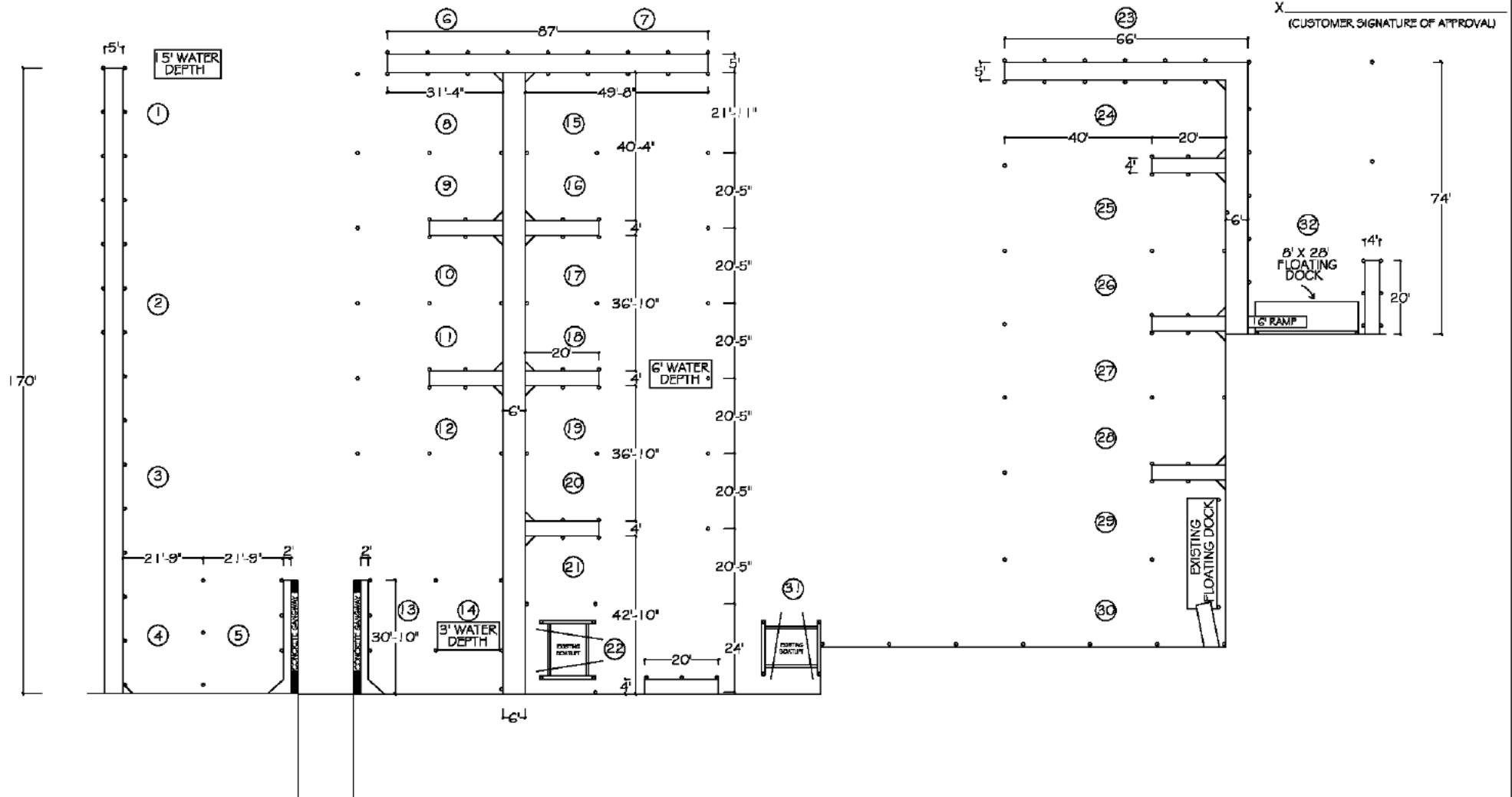
SPEELER FOUNDATIONS, INC.
 6111 142nd Avenue North
 Clearwater, FL 33760
 (727) 535-5735
 FAX (727) 535-6041

JOB: Galati Yacht Sales
 SHEET NO: 1 OF 1
 CALCULATED BY: H.B.
 CHECKED BY:
 SCALE: 1"=40' (U.N.O.)

DATE: 9/20/16
 DATE:

QUALITY MATERIALS
 TIMBER PILING
 2.5 C.C.A. SALT TREATED
 BOAT LIFT AND TIE PILING
 HAMMER DRIVEN
 OUTSIDE STRINGERS DOUBLE
 2x10 PRESSURE TREATED
 BOLTED WITH 5/8" GALVANIZED BOLTS
 INTERMEDIATE STRINGERS
 2FT. ON CENTERS MAX.
 DECKING 2x6 .40 AGG #1 DENSE
 FASTENED WITH STAINLESS STEEL SCREWS
DECKING OPTIONS
 * AZEK PVC

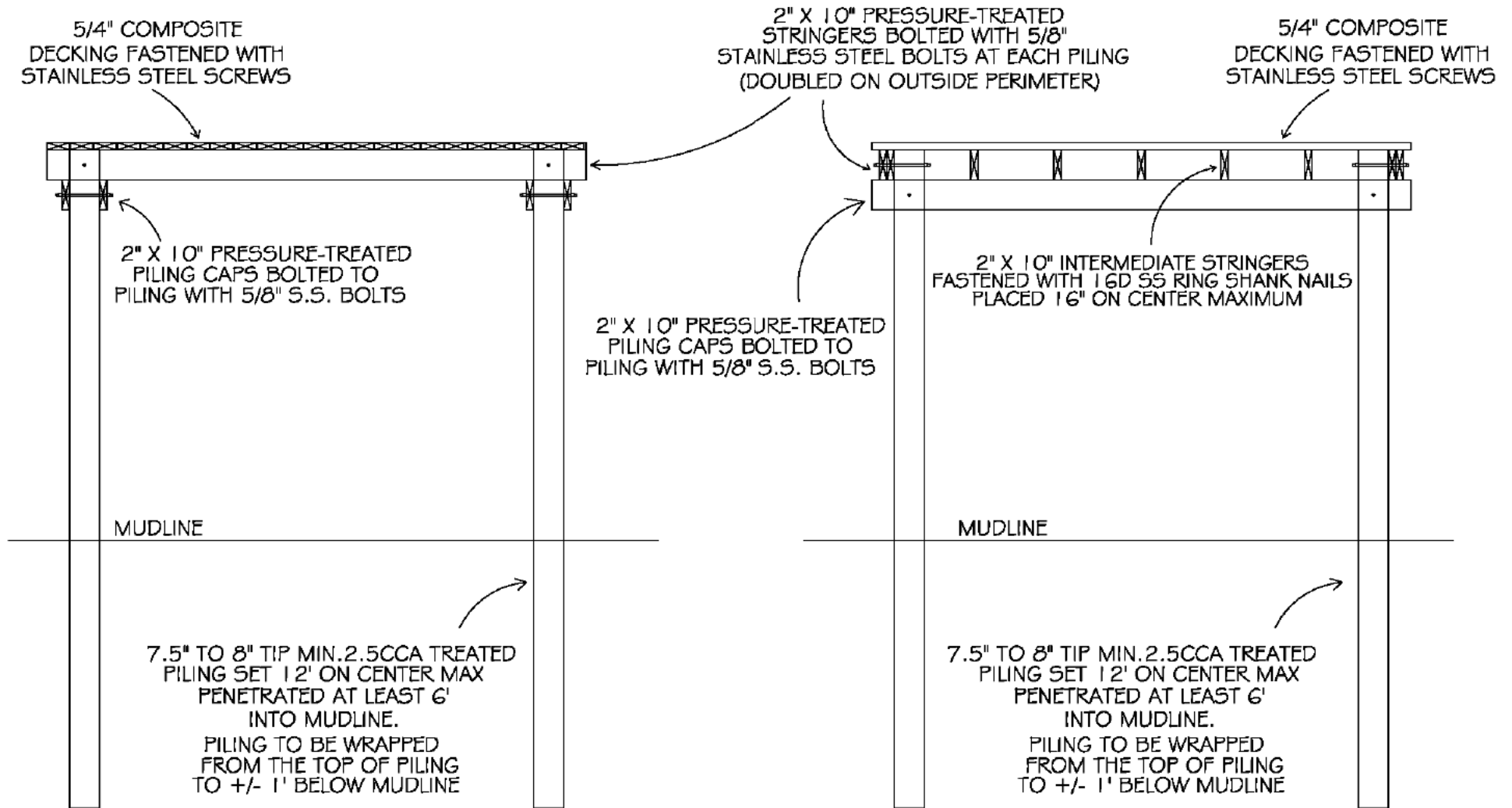
NOTE: WATER DEPTHS RANGE FROM 3' TO 15'
 AT MEAN LOW WATER
 DOCKS TO BE +/- 4' ABOVE MEAN HIGH WATER



SPEELER FOUNDATIONS, INC.
6111 142nd Avenue North
Clearwater, FL 33760
(727) 535-5735
TELEFAX (727) 535-6041

JOB: Galati Yacht Sales(GMI Holding)
SHEET NO: 1 OF 1
CALCULATED BY: H.B.
CHECKED BY:
SCALE: NOT TO SCALE

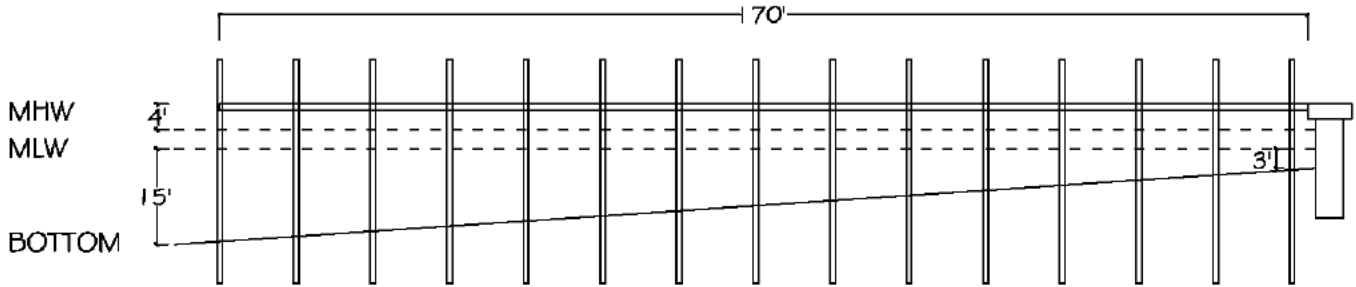
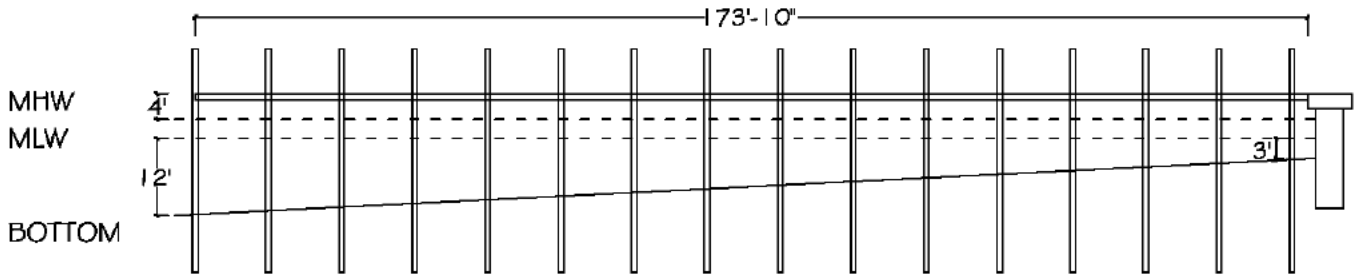
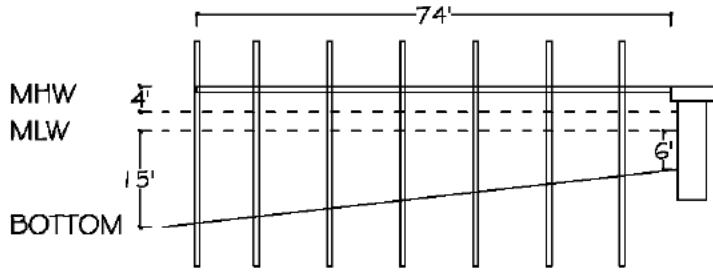
DATE: 11/8/16
DATE:



COMMERCIAL DOCK

NAME: GMI Holding Co.(Galati)

12030 Gandy Blvd. N. St. Petersburg, FL. 33702



ENG. SCALE: 1" = 30'

